



Summer Conference  
August 15-16, 2007  
Overland Park, Kansas

It's time for learning.

**SelectServer XM**

Kevin van Haaren  
HNTB Corporation



# Agenda

- Licensing model changes
- 2004 Licensing
- Other Bentley applications
- SelectServer XM/Gateway Installation
- Suggested Server Layouts
- Configuration/Administration
- Reports
- Tips/Tricks



# Bentley Licensing Model Change

- Old Model: Strict License Enforcement
  - Application must be given permission to run by license server
    - » Clients can not run if not able to talk to a license server
  - Heartbeats used to indicate application is still running
    - » Heartbeat errors if client can't talk to license server



# Bentley Licensing Model Change

- New Model: Usage Reporting (XM Applications)
  - Applications can usually run
    - » Up to X days without activation
      - X is dependent on application
      - MicroStation is 30 days.
  - Applications track their own usage
    - » No heartbeats
  - Usage reported to central server daily
    - » If server unavailable, usage reporting will be attempted on the next day
    - » After 30 days without reporting usage Application will go into demo mode
  - All applications share a single registry entry for server name and activation key



# 2004 Application Licensing

- Bentley's 2004 applications not updated to new licensing
- Select Server Gateway replaces Select Server 2004 and serves licenses to 2004 Applications
  - Always says yes to available licenses
  - Gateway is an XM Client to XM Server so same 30-day rules apply between Gateway and Server
    - » 2004 clients still bound by heartbeat requirements



# Other Bentley Applications

- Haestad Methods Products
  - SewerGEMS, WaterGEMS, CivilStorm, WaterCAD, etc...
  - Branded Haestad Methods – uses original Haestad Methods or 2004 licensing
  - Branded Bentley – Uses XM licensing
  - Feature based licensing
- StaadPro, RAM



# Installation Requirements



# SelectServer XM Installation Requirements

- SelectServer XM
  - Windows Server
    - » 2000 SP4, 2003 (SP1 optional)
  - IIS
  - SQL Server
    - » 2000 or 2005
    - » MSDE (Free version of 2000)
    - » SQL Server Express 2005 (Free version of 2005)
  - Activation Key and Serial Number (from Bentley)
  - License file (stored on Bentley's server)



# SelectServer XM Gateway

- Server
  - Server
    - » Windows 2000, 2003
    - » Windows XP also works
  - Network connection to XM SelectServer

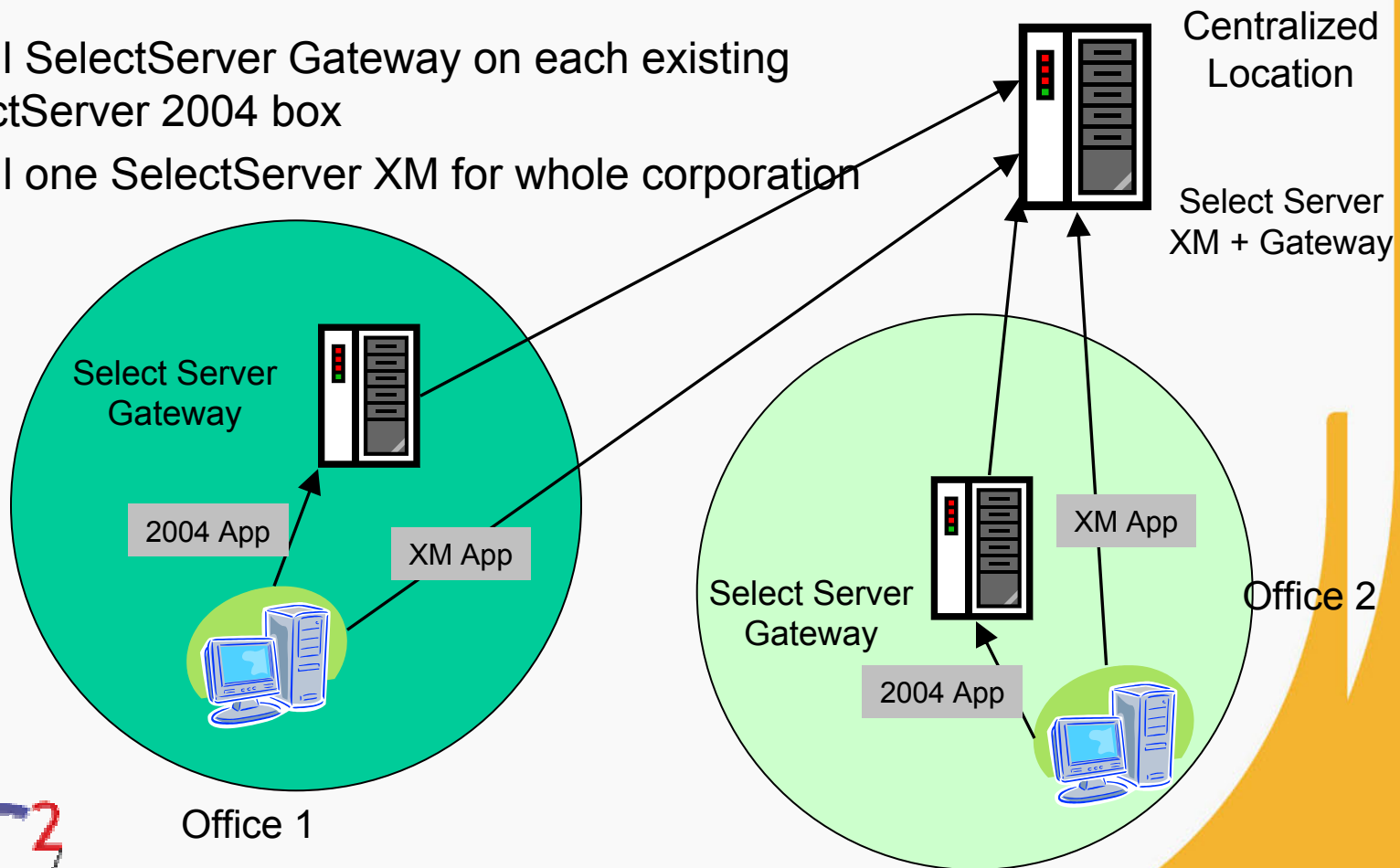


# Possible Server Layouts



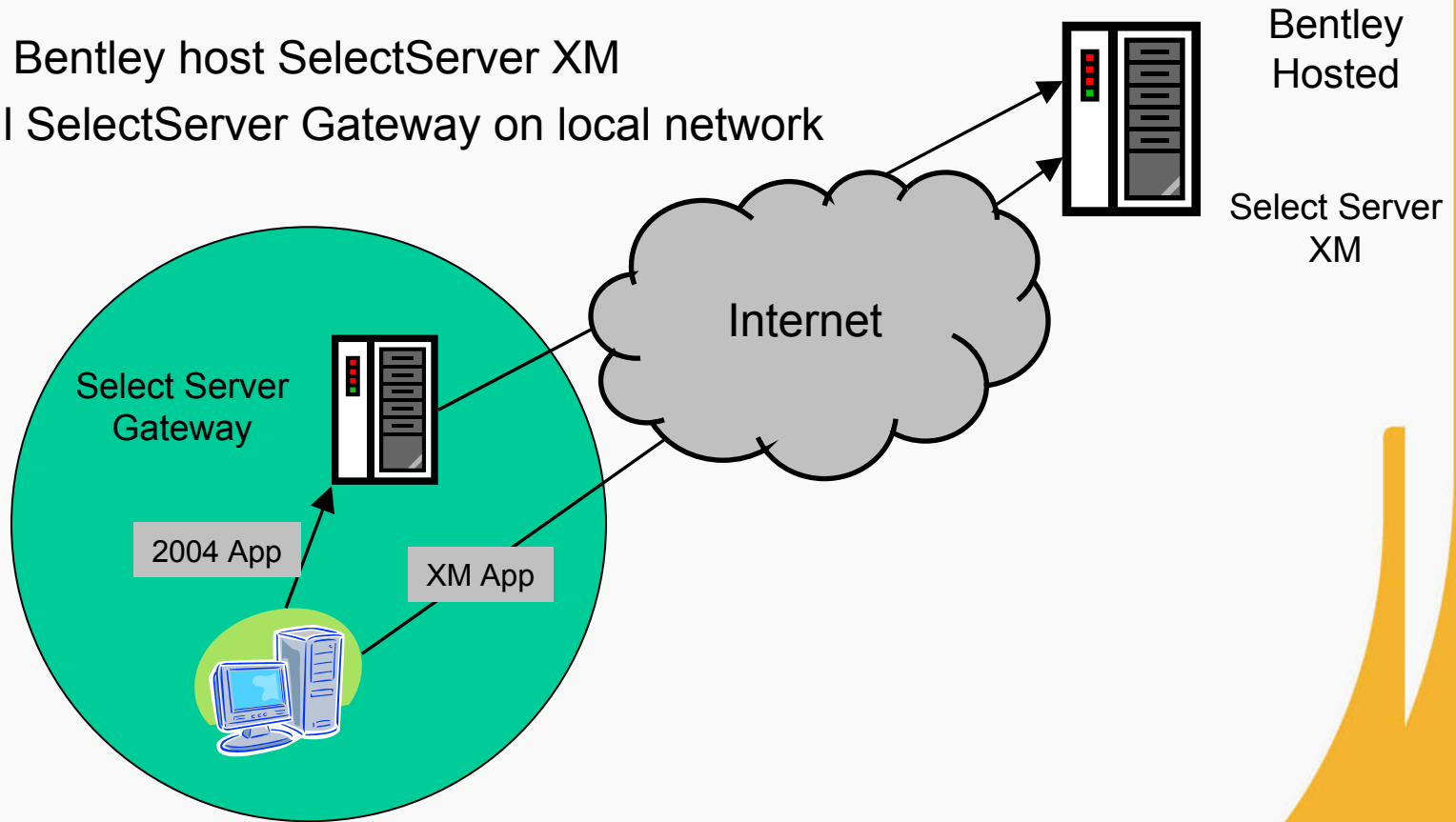
# Large Multi-Site Enterprise

- Install SelectServer Gateway on each existing SelectServer 2004 box
- Install one SelectServer XM for whole corporation



# Small Companies

- Have Bentley host SelectServer XM
- Install SelectServer Gateway on local network



# Configuration/Administration

<http://server/bss/admin>



# Server Settings

- Select Server Settings
  - Turn on SSL to encrypt data between your network and Bentley
- Usage Log Transmittal
  - If external network connections not available, use this to upload usage logs manually
  - Upload files to Bentley, upload acknowledgement file returned from Bentley.
- License Configuration
  - Automatically accept any change to the SELECT Server license.
  - I leave this off in case bad license files downloaded from Bentley. I wait to apply new license files until convenient to me.



# More Server Settings

- Data Archiving

- Retain 6 – 24 months of data, archive rest into other database tables.
- We set to 24 months to keep 2 years of data (currently at over 300,000 database records)
- Reports do not include archived data

- Mail Settings

- SMTP (internet standard) mail server
- SMTP server port (default is 25)
- Administrator address: notifications sent here
- From address: address shown in From field
- Some SMTP servers require authentication, use authentication fields to enter this data.



# More Server Settings

- Proxy Settings
  - Usage logs uploaded over web ports (80)
  - Some networks require using a proxy server to accomplish this.
  - Some proxies require authentication to use.
- Windows Services
  - Set time of day to upload logs.
  - I recommend changing this from the default.
- Logging
  - SelectServer can send error logs to Bentley to help debug problems.



# Site Settings

- Settings are per site.
  - Select site to adjust (or turn on Apply to All Sites) in upper-right corner
- Enable Notifications
  - Have errors e-mailed to you
    - » Turn this on, unless you plan on manually checking the server daily
  - Enable notification of license expiration
    - » Daily reminder once threshold past – can be annoying
    - » Bentley occasionally slow generating license files. Might want longer period to account for this.



# Client Access Restrictions

- Can prevent machines from getting licenses (from entire server or a particular site.)
  - Default is grant access to all machines
  - Change to deny to all machines
  - Add exceptions
    - » Exceptions can be machine name, IP address, IP range, Domain Name



# Checkout License Restrictions

- Restrict which clients can checkout a license for an extended periods
  - This feature is new with 8.9.3 release. Replaces the checkout.inf file previously used by SelectServer and Gateways.
  - Applies to 2004 and XM licenses
  - With XM checkouts not as necessary, just let local app track usage and have it auto upload at next connection
  - Default is no applications available for checkout. Be sure to mark apps needed for checkout as available to users.



# Temp Activation Keys

- Create your own sites (i.e. authentication number)
  - Restrict list of apps available to that site
  - Restrict apps available for checkout
  - Tagged in database as being from that site (i.e. chargeback reporting)
  - Expiration date can be extended without generating new authentication number
  - Authentication number must be used in Gateway or XM Apps to associate computers with that site



# Tips and Tricks

- Don't remove SelectServer 2004
  - Disable old service but leave installed
- Checkouts
  - Application Restrictions
  - Client Restrictions
- License Tool
- License Tool command line

