



Summer Conference
August 15-16, 2007
Overland Park, Kansas

It's time for learning.

Bentley Redline XM Overview

Gary Cox, Mike Remboldt - KDOT

What is Bentley Redline?

- A redline markup tool.
- A collaboration tool.
- A measuring tool.
- A presentation tool.

Why use Redline?

- Price FREE FREE FREE with Bentley Select!
- Save MicroStation Licenses.
- Keeps your design files safe from???
- Save paper, copy versioning & comment compiling headaches.

Who can use Redline?

- Managers
- Engineers
- Technician
- Maintenance
- Right of Way

PRESENTING

BENTLEY REDLINE "XM"

- Licensing
- Element priority
- Transparency
- Reference PDF
- Interface, tools, menus
- Element Information
- Place note
- Printing
- References

How to make Redline work for you!

- XM license valid 30 days w/o connection to license server
- File Names, can contain user name
- Storage, destination can be set

Redline Configurations

- `_USTN_USERINTNAME = REDLINE`
- `_USTN_DEFUSERINTNAME = REDLINE`
- `C:\Program Files\Bentley\Redline\config\system\YourFileName.cfg`

Suggested RDL_DIR settings

- `RDL_DIR=$(_DgnDir)/Redline/.$(USERNAME).rdl`
- `RDL_DIR=$(_DgnDir)Redlines/.$(USERNAME)`
- `RDL_DIR=$(USERPROFILE)/MYDOCU~1/.$(USERNAME).rdl`
- `RDL_DIR=$(USERPROFILE)/Desktop/.$(USERNAME).rdl`

Add user configuration to users directory:

`C:\Documents and Settings\All Users\Application Data\Bentley\WorkSpace\Users*.ucf`

Redline Configurations

- `MS_FULLPATHINTITLEBAR = 1`
- `MS_MAINMENU DOCKING BESIDE = 1`
- `MS_HIDE_LIBRARY_SOURCE_NAMES = 1`
- `MS_LEVEL_PICKER_WIDTH = 200`
- `MS_DEFCTBL = (_USTN_SITE)ctb\KDOT_clr.tbl`

Here is one for MicroStation

- Set `RDL_DIR` in MicroStation for autoloading Redline files
`RDL_DIR=$(_dgnDir)/Redline/.*.rdl`

SAMPLE .ucf FILE

```
# redline_MyDocs.ucf - Puts your Redline files in My Documents.
#
# Modified 2005.06.10 by KDOT CADD Support, Eng Supp., BoCS
# more information:
#   Gary Cox 785.296.0335 or Mike Remboldt 785.296.1093
#
#-----
# Current Revision:
# $Workfile: viewonly.ucf $
# $Revision: 1.2.6.1 $ $Date: 2004/03/26 17:19:54 $
#
# Copyright 1993, Bentley Systems, Inc.
#
# Limited permission is hereby granted to reproduce and modify this
# copyrighted material provided that the resulting code is used only in
# conjunction with Bentley Systems products under the terms of the
# license agreement provided therein, and that this notice is retained
# in its entirety in any such reproduction or modification.
#
#-----
_USTN_USERDESCR = Redlining environment

#-----
# select the default project.
#-----
USTN_PROJECTNAME : untitled

# Defines the default user to open. -----
_USTN_USERINTNAME = redline
_USTN_DEFUSERINTNAME= redline

# Specifies whether a reference displays newly created levels.-----
# The setting also applies to new levels in nested references. -----
MS_REF_NEWLEVELDISPLAY = 1

# Saves files in My Documents folder. -----
RDL_DIR=$(USERPROFILE)\MYDOCU~1\$(USERNAME).rdl

# MS_FULLPATHINTITLEBAR nice to see where the file is stored at times. -----
MS_FULLPATHINTITLEBAR = 1

# Shortens the width of the pull-down menu bar. -----
MS_MAINMENUDOCKINGBESIDE=1
```

Redline Configurations

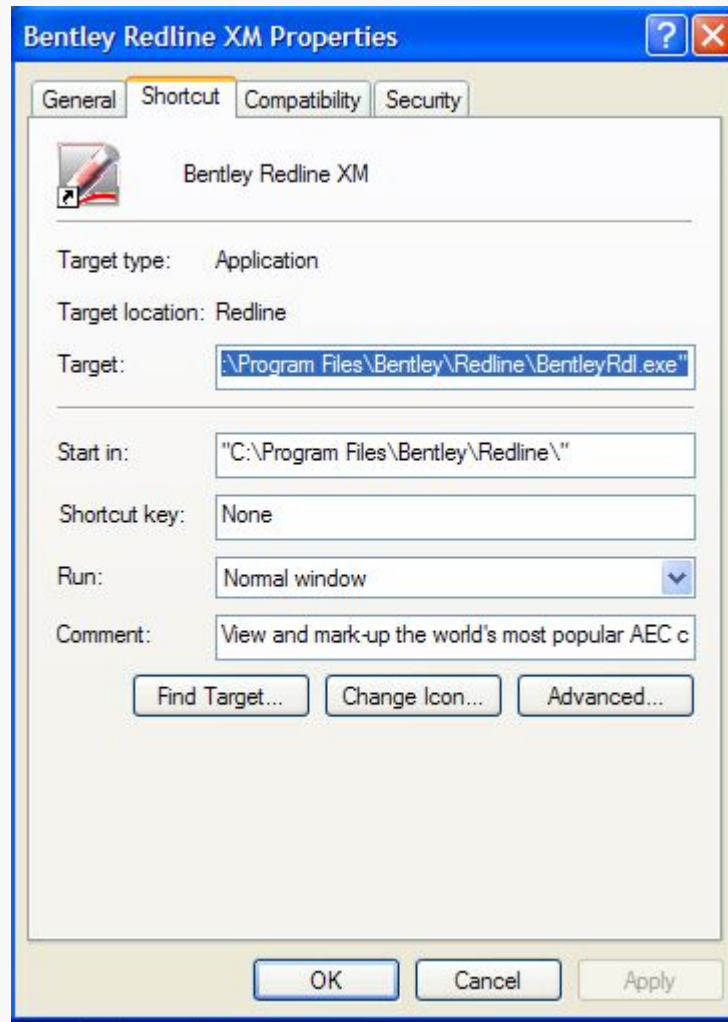
Desktop shortcuts can also be used to select the user to open with.

- "C:\Program Files\Bentley\Redline\BentleyRdl.exe"
-wsRDL_DIR=\$(USERPROFILE)\Desktop\ -wuredline_Desktop
- "C:\Program Files\Bentley\Redline\BentleyRdl.exe"
-wsRDL_DIR=.\$(USERNAME).rdl -wuredline_DgnDir

A project file can also be selected.

- "C:\Program Files\Bentley\Redline\BentleyRdl.exe"
-wsRDL_DIR=\$(USERPROFILE)/MYDOCU~1/ -wuredline_MyDocs -wpredKDOT

Redline Desktop Icon



Questions?

Thanks!



Summer Conference
August 15-16, 2007
Overland Park, Kansas

It's time for learning.

Bentley Redline Overview

Gary Cox, Mike Remboldt - KDOT